The background of the slide is a top-down view of a wooden desk. On the left, there is a red analog clock showing approximately 10:10, a wooden ruler, a blue stapler, a silver pencil sharpener, a pair of compasses, a yellow sticky note, and a yellow highlighter. On the right, there is a spiral-bound notebook with a wooden pencil resting on it. To the right of the notebook, several colored pencils are scattered. The text is centered on the notebook page.

Hybrid Learning On-Campus and Distance Learning Options

Family Presentation
October 2020

Tle : SPC + SVT



ROCHAMBEAU
THE FRENCH INTERNATIONAL SCHOOL



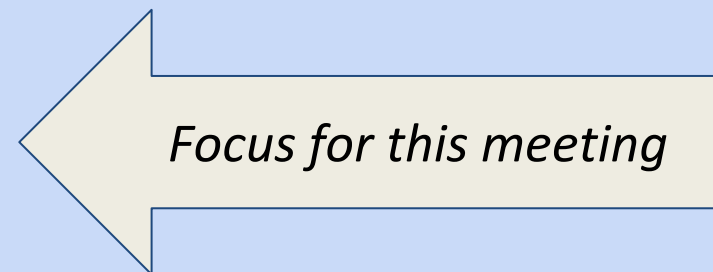
Phased Return to Campus

PHASE 1: OCTOBER 5th

- Bradley Campus: PS and MS
- Rollingwood Campus: CP and all Immersion classes
- Forest Rd Campus: CE1

PHASE 2: OCTOBER 26th

- Bradley Campus : GSA and GSC
- Rollingwood Campus: GSB
- Forest Rd Campus: CE2 + 6th grade + SPC/SVT Labs



PHASE 3: NOVEMBER 9th

- Forest Rd Campus: CM1 and CM2 (alternating A / B weeks)



Criteria for Decision Making

- **Health Data:** The local, state, national and international health metrics and report from COVID Data group.
- **The Maryland State Department of Education guidelines** confirming a hybrid reopening for schools would be permissible under the current health conditions.
- **School Resources and Needs:** A sufficient alignment of our school's resources (classroom spaces, new health procedures, availability of teachers, technology innovations) and needs expressed by families, especially at the Primary grades.
- **Montgomery County Recommendations:** The guidance advising private schools to remain closed expired on October 1.

CDC indicators and thresholds for risk of introduction and transmission of COVID-19 in schools

INDICATORS	Lowest risk of transmission in schools	Lower risk of transmission in schools	Moderate risk of transmission in schools	Higher risk of transmission in schools	Highest risk of transmission in schools
CORE INDICATORS					
Number of new cases per 100,000 persons within the last 14 days*	<5	5 to <20	20 to <50	50 to ≤ 200	>200
Percentage of RT-PCR tests that are positive during the last 14 days**	<3%	3% to <5%	5% to <8%	8% to ≤ 10%	>10%
<p>Ability of the school to implement 5 key mitigation strategies:</p> <ul style="list-style-type: none"> • Consistent and correct use of masks • Social distancing to the largest extent possible • Hand hygiene and respiratory etiquette • Cleaning and disinfection • Contact tracing in collaboration with local health department <p>Schools should adopt the additional mitigation measures outlined below to the extent possible, practical and feasible.</p>	Implemented all 5 strategies correctly and consistently	Implemented all 5 strategies correctly but inconsistently	Implemented 3-4 strategies correctly and consistently	Implemented 1-2 strategies correctly and consistently	Implemented no strategies
SECONDARY INDICATORS					
Percent change in new cases per 100,000 population during the last 7 days compared with the previous 7 days (negative values indicate improving trends)	<-10%	-10% to <-5%	-5% to <0%	0% to ≤ 10%	>10%
Percentage of hospital inpatient beds in the community that are occupied***	<80%	<80%	80 to 90%	>90%	>90%





Percentage of intensive care unit beds in the community that are occupied***	<80%	<80%	80 to 90%	>90%	>90%
Percentage of hospital inpatient beds in the community that are occupied by patients with COVID-19***	<5%	5% to <10%	10% to 15%	>15%	>15%
Existence of localized community/public setting COVID-19 outbreak****	No	No	Yes	Yes	Yes

*Number of new cases per 100,000 persons within the last 14 days is calculated by adding the number of new cases in the county (or other community type) in the last 14 days divided by the population in the county (or other community type) and multiplying by 100,000.

**Percentage of RT-PCR tests in the community (e.g., county) that are positive during the last 14 days is calculated by dividing the number of positive tests over the last 14 days by the total number of tests resulted over the last 14 days. Diagnostic tests are viral (RT-PCR) diagnostic and screening laboratory tests (excludes antibody testing and RT-PCR testing for surveillance purposes). Learn more on the [Calculating Severe Acute Respiratory Syndrome Coronavirus 2 \(SARS-CoV-2\) Laboratory Test Percent Positivity: CDC Methods and Considerations for Comparisons and Interpretation webpage](#).

***Hospital beds and ICU beds occupied: These indicators are proxies for underlying community burden and the ability of the local healthcare system to support additional people with severe illness, including those with COVID-19. A community can be defined at the city, county or metro area level; federal analyses of hospital utilization rates within a community are typically conducted at the core-based statistical area (e.g., by metropolitan or micropolitan status).

**** Sudden increase in the number of COVID-19 cases in a localized community or geographic area as determined by the local and state health department.



Distance Learning Continues

Distance learning will remain an option for students who prefer it.

GS Students will continue to receive live instruction from their teachers.

The new schedule will run in reverse from the in-person schedule, so that French will be offered in the afternoon and English, Flsco, SLS and other asynchronous work in the morning.

For CE2/3rd grade - 6ème/6th grade

Students will participate in their assigned class through live-streaming from their teachers and will continue to have access to office hours for additional support.



Class Locations and Options Overview

Terminale students - SPC + SVT Lab Classes at Forest Road Campus

- 2-hour lab classes only
- Weekly meetings on Tuesdays
- **SPC class of Mr. Oliver** meets from 8:30 am to 10:30 am
- **SPC class of Mr. Mathieu** meets from 10:30 am to 12:30 pm
- **SVT class of Mr. Brettnacher** meets from 10:30 am to 12:30 pm



Health & Safety Protocols On Campus

Physical Distancing and other Measures:

- space between classroom desks
- defined recess times by class group
- organized student movement / circulation within the buildings

Face coverings worn on campus

- Used at all times except meals
- Mask Breaks outdoors when distancing can be maintained
- Complies with Montgomery County guidance for all persons age 2 and over

Hand-washing and General Hygiene

- Soap and/or hand sanitizer will be available in all classrooms and in hallways
- Touchless faucets
- Restroom use limits number of students at one time



Health & Safety Protocols On Campus

Daily Health Screenings

- **At Maternelle Campus (Bradley Campus):**
Daily Health Questionnaire online AND
In-person temperature check by parent/caregiver
- **Elementary + Secondary Students (Rollingwood + Forest Road Campuses):**
Daily Health Questionnaire online

Health Isolation Room on each campus should a student become ill

***All students, teachers and staff members with Covid-19-like symptoms,
and all of their family members, must remain at home.***

Decision Aid: Exclusion and Return for Laboratory Confirmed COVID-19 Cases and Persons with COVID-19-like Illness in Schools, Child Care Programs, and Youth Camps

For the purposes of this decision aid, COVID-19-like illness is defined as: Any 1 of the following: cough, shortness of breath, difficulty breathing, new loss of taste or smell, **OR At least 2 of the following:** fever of 100.4° or higher (measured or subjective), chills or shaking chills, muscle aches, sore throat, headache, nausea or vomiting, diarrhea, fatigue, and congestion or runny nose.

Person (child, care provider, educator, other staff) with **1 new symptom not meeting the definition of COVID-19-like illness.**

Exclude person and allow return when symptoms have improved, no fever for at least **24 hours** without fever reducing medication, **AND** criteria in the [Communicable Diseases Summary](#) have been met as applicable. **If person develops symptoms of COVID-19-like illness, follow processes below for person with COVID-19-like illness.**

An **asymptomatic person** (child, care provider, educator, other staff) who **tests positive for COVID-19.**

The asymptomatic person should stay home for 10 days from positive test.

Close contacts should stay home for 14 days from the date of last exposure **even if they have no symptoms or they have a negative COVID-19 test done during quarantine.**

Person (child, care provider, educator, other staff) with COVID-19-like illness:

- **Exclude** person and recommend that they talk to their health care provider about testing for COVID-19 or whether there is another specific diagnosis.
- **The person should isolate pending test results or evaluation by their health care provider.**
- **Close contacts of the ill person should quarantine per [CDC guidelines](#).**

Person has positive test for COVID-19.

Person does not receive a laboratory test or another specific diagnosis (e.g. influenza, strep throat, otitis) by their health care provider.

Person has negative test for COVID-19.

Health care provider documents that the person has another specific diagnosis (e.g. influenza, strep throat, otitis) or health care provider documents that symptoms are related to a pre-existing condition.

The ill person should stay home at least 10 days since symptoms first appeared **AND** until no fever for at least **24 hours** without fever-reducing medication **AND** improvement of other symptoms.

The ill person should stay home until symptoms have improved, no fever for at least **24 hours** without fever-reducing medication, **AND** criteria in the [Communicable Diseases Summary](#) have been met as applicable.

The person should consider being tested/retested for COVID-19 if symptoms do not improve.

Close contacts DO NOT need to stay home as long as they remain asymptomatic.



Covid-19 cases or symptoms

If a student or staff member tests positive or has symptoms consistent with COVID-19, we will cooperate with Montgomery County health officials who will undertake contact tracing steps. This is our obligation as a school within Montgomery County.

Response within the school will depend on the specific contacts within the school. Some number of individuals may need to isolate from on-campus instruction for a period of time. This could be limited to a specific individual, a class group, a specific grade, whole building, or whole school community. We will be following the advice of our local health authorities with whom we are already working closely.

How will we inform our community? If the Health Department believes there is reason to inform our community of any exposure or risk, we will fully cooperate in this. This is the procedure we followed with early cases in March 2020 and recent case for concern in October 2020.



Covid-19 Testing

At this time, Covid-19 testing is not required by Rochambeau in order to return to campus. However, we continue to follow guidance from the county, state and national health agencies regarding quarantine times and testing necessity.

The following Montgomery County government web site provides FREE coronavirus testing locations: <https://www.montgomerycountymd.gov/covid19/testing.html>



Travel Guidelines

We share the strong **recommendation from the Maryland Department of Health that all students and families refrain from nonessential travel outside the DC area due to the risk of COVID-19 infections in other states.** Should you decide to travel, the guidelines issued by the Maryland Department of Health should be followed:

- Individuals returning from travel are urged to **get tested for COVID-19** in an appropriate, timely way upon their return.
- Individuals traveling to a state with a COVID-19 **test positivity rate above 10%** are to get tested and self-quarantine until a negative test is received.
- Known exposure to a person who tests positive for COVID-19 should **self-quarantine for 14 days**, even if they have a negative test.
- **International travelers** should follow the guidelines above as well as CDC advice regarding post-travel quarantine.

Free testing locations: <https://www.montgomerycountymd.gov/covid19/testing.html>



Tle - SPC + SVT Overview + Questions

- Maximum 13 students per Lab for each class
- Class groups must remain separate at all times, from arrival to departure
- **Only the labs will be accessible to students.** No other areas on campus will be available to students before or after the class sessions, including the cafeteria, picnic areas outdoors, etc.
- Physical Distancing in the Lab rooms
 - only 1 student will be assigned to each workstation (instead of 2)
 - plexiglass dividers on each workstation
- Students who choose distance learning



General Questions

- Choosing in-person or distance learning - can I change my mind later?
- Will educational content be the same for in-person and distance learning classes? How will you ensure the quality of education in both?
- What happens in case of teacher illness?
- What will be the Arrival/Dismissal times and procedures
- How will Recess and Lunch times be organized and safety maintained?



General Questions

- Air circulation on campus? Special filters?
 - HVAC systems inspected and serviced
 - Running AC at maximum level of outside air in order to increase the overall air circulation.
 - Windows and doors will be open to further increase airflow
 - Filters are Merv 13 rated and are being replaced each month (instead of every 3 months)



Transportation Overview

Limited service started on October 12th.

- Home/School service and Campus Shuttle (Navette) available
- Very limited capacity on each bus
- Modified routes based on current needs - routes from last year may change
- All passengers and staff (driver, monitor) must wear masks
- Cleaning and disinfection of buses after morning and afternoon routes
- Hand sanitizer use by all passengers as they enter and exit the bus

Sign up by Friday, Oct. 16 for service starting Monday, Oct 26.



What's next?

- **Wednesday, October 14th, by 2pm - deadline to respond to Family Survey.**

If you don't specifically request Hybrid Learning (In-Person instruction) your child will continue participating in the Distance Learning Program through December 2020.

- **Friday, October 16 - deadline to request Transportation starting October 26.** (Requests received later will have a start-date 7-10 days after the request.)
- **Monday, Oct. 26 - Start of in-person instruction for GS, CE2 and 6ème classes.**
- **Tuesday, Oct. 27 - Start of in-person Lab class for SPC and SVT students**